

OUTBACK KITTERS



PRE RUNNER BAR

INSTALLATION GUIDE

outbackkitters.com

OUTBACK KITTERS

OK911003TB-2TA-K OUTBACK KITTERS Pre Runner Bar, Texture Black, 2 Tabs

CHEV 2500/3500 (2020-2024)

CONTENTS

- 1x **OK911003TB-2TA** Pre Runner Bar, Texture Black, 2 Tabs
- 2x **OK181003** Outback Kitters 12" Light Bar for Pre Runner Bars, Flood Light, Black Lens
- 1x **OKPRGE001** Outback Kitters Aluminium Fairlead, Black
- 4x **OK121221** Flat Parking Sensor Housing (Single)
- 4x **OK131000** Parking Sensor Extension Harness, Single
- 1x **OKWHPR002** Pre Runner Bar Wiring Harness for 2 x Side Lights & Optional Front Lightbar
- 1x **OKWHPR003** Outback Kitters Wiring Harness for Lightbar Power including Fuses & Relays
- 1x **OK131001** Wiring Harness Headlight 12 Pin Patch Harness (High Beam, Indicator, Park Light & Earth)
- 1x **PR_FITTINGKIT** Pre Runner Fitting Kit
- 1x **PR_CRADLEMOUNT** Pre Runner - Cradle Mount
- 2x **PR_CHEEKS** Pre Runner - Cheeks (LH, RH)
- 1x **PR_COMPLIANCEPLATE** Pre Runner - Compliance Plate
- 1x **PR_PALLET** 2200x600 Pallet

TOOLS NEEDED

- Ratchet/electric ratchet
- Breaker bar/rattle gun
- Various sized sockets
- Various sized spanners
- Drill/drill bits
- Air Saw
- Stanley Knife
- Clip removal tool
- Ruler and marker pen
- Qualified auto electrician recommended
- Second person to help install the bar
- Second person to help install the bar

TIME

6 HOURS

DIFFICULTY

MEDIUM

IMPORTANT NOTES

- Winches larger in shape than the Carbon Scout Pro 15000lb Winch will not fit
- The gap underneath the hoop is 850mm x 84mm if you wish to install your own lightbar

FAILURE TO INSTALL THIS PRODUCT AS SPECIFIED IN THE INSTALLATION PROCEDURE WILL VOID ALL WARRANTY. IF ANY PARTS HAVE ARRIVED DAMAGED OR WERE NOT SUPPLIED, PLEASE TAKE PHOTOS AND CONTACT YOUR SUPPLIER.

Step 1

A) Park the car on flat level ground with the handbrake on.

B) Remove the number plate.

IMPORTANT NOTE

THE NUMBER PLATE SHOULD BE SET ASIDE FOR LATER FITMENT.



Step 2

Pop the bonnet and remove the two screws on the bonnet latch.

IMPORTANT NOTE

DO NOT SHUT THE BONNET UNTIL THE LATCH IS INSTALLED AT THE END OF THE INSTALLATION. FAILING TO DO SO WILL RESULT IN THE BONNET NOT BEING ABLE TO RELEASE.



Step 3

Locate the factory plastic trims over the wheel arches.

Gently pull on the bottom side of the plastic, closest to the bumper, and work your way to the door, ensuring each clip is gently released at a time.



Step 4

A) Using a 7mm socket, remove the screw securing the front fascia on both sides of the vehicle.

B) Using a Torx Bit T1500, remove the screws from the inner guard securing to the front fascia plastic



Step 5

A) Gently get your fingers (or trim tool) under the tab where the retaining screw was for the front fascias and pull to release the clips holding the fascia in.

B) Work your way up the fascia to the light, releasing the clips along the way.



Step 6

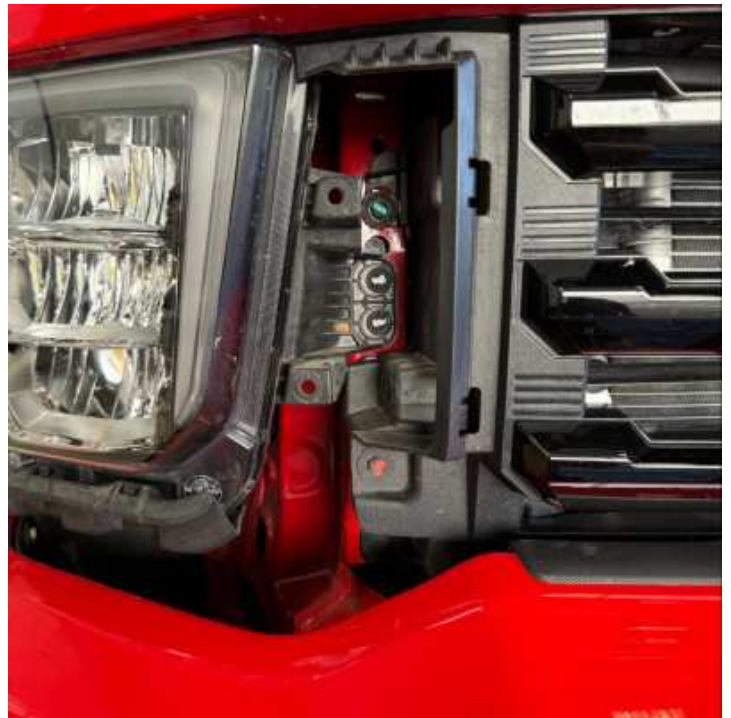
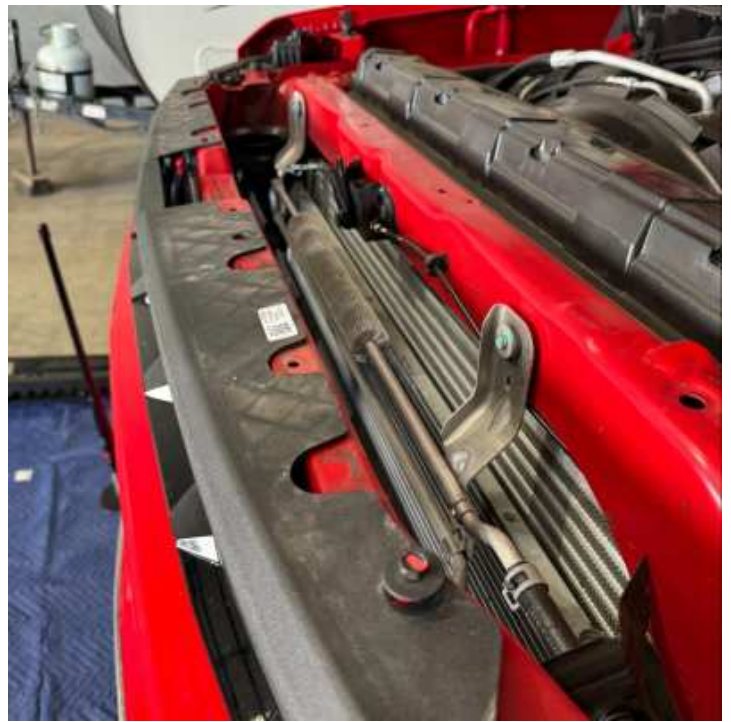
Remove all plastic clips, using a trim tool, from the top grille cover located under the bonnet.



Step 7

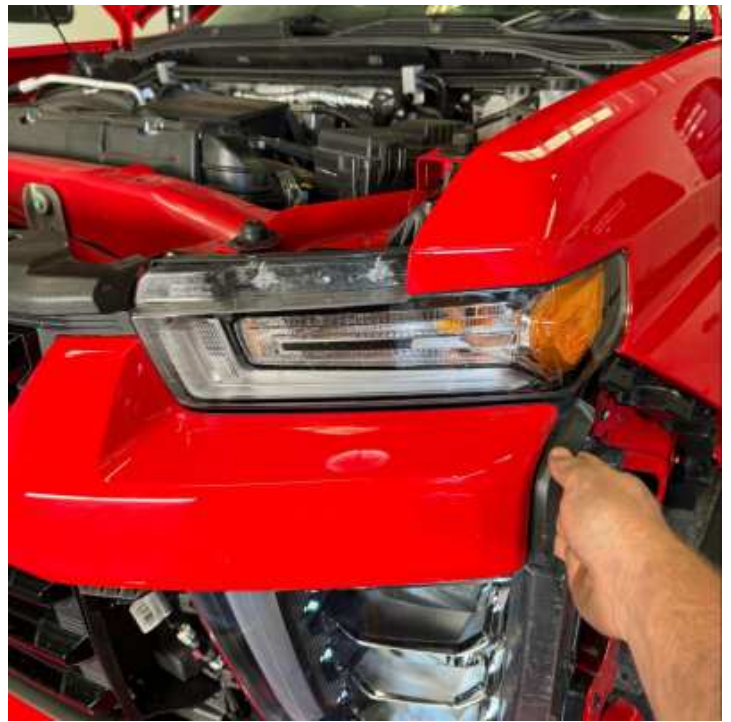
A) When the top cover is removed, locate the retaining bolts for the top of the grille. Using a 10mm socket, remove the bolts.

B) Behind the front facia (beside the headlight) there will be more 10mm bolts to be removed.



Step 8

- A) Starting below the headlight from one side of the vehicle, gently pull the grille to release the plastic clips.
- B) From above where the top of the grille attaches to the body, pull up and forward to remove the grille.

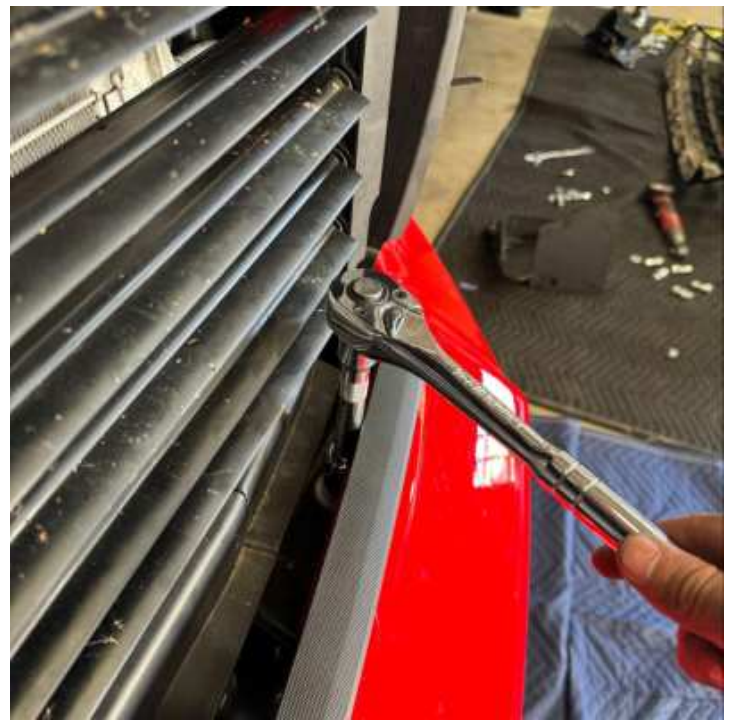


Step 9

While the grille is almost off, on the passenger side there is the plug for the camera and rubber tube for the mister to be disconnected from the grille.

**Step 10**

Using a 18mm socket with an extension, remove (2) bolts behind the bumper from above (one bolt will be at the top of the bumper and the second bolt at the bottom)



Step 11

From below, remove (4) 15mm bolts from the support brackets to the chassis (2) either side of the bumper

**Step 12**

Located below the passenger side headlight there will be a 16-pin connector that will need to be disconnected to allow the cabling within the bumper to be removed from the car.



Step 13

With the help of another person, remove the bumper by gently pulling towards the front of the vehicle and ensuring that all components are free and disconnected.

The factory tow points will remain (until the next step) and the bumper will pull off around them.

**Step 14**

Place the bumper on a soft sheet or stand for removal of wiring and sensors.



Step 15

Now that the bumper is removed, locate the (2) bolts of each tow point in the chassis and remove and discard the factor tow points.



Step 16

Above the factory tow point location, using a 15mm socket remove the (4) bolts facing forward of the vehicle and remove the mounting plates. Retain the (8) bolts for pre runner bar mounts.

**Step 17 - ONLY 2020-2023 MODELS**

Locate the (4) 10mm bolts holding the front lower grille. When removed, disconnect the cable plugged into the motor behind the grille.

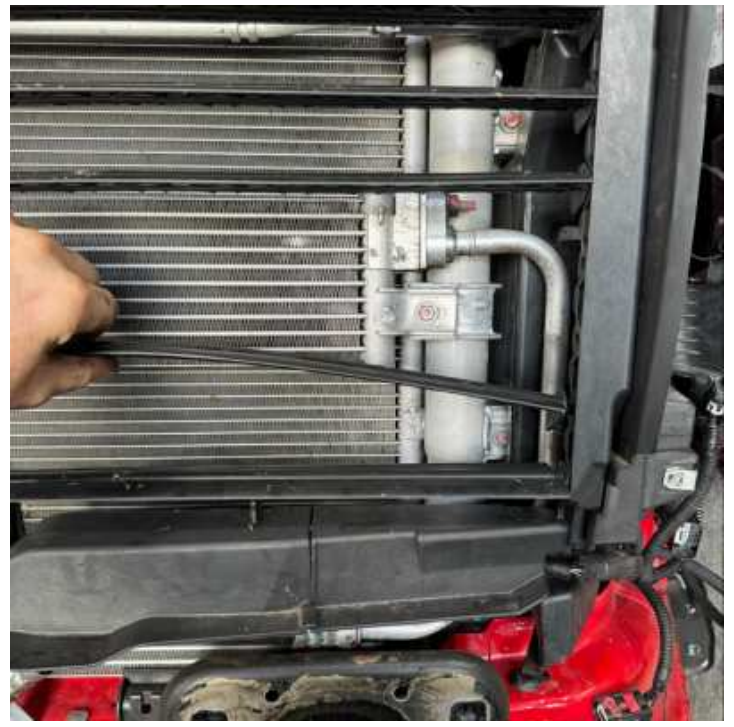
IMPORTANT NOTE

THIS STEP IS FOR 2020-2023 MODEL ONLY. 2024+ MODELS SKIP THIS STEP.



Step 18

Looking at the grille, on the passenger side, gently remove the bottom 4 fins, by pulling from the middle of the fin and releasing it from the mounts on either side.

**Step 19**

With the bottom grille on the bench, using an air saw or grinder, remove the bottom left tab of the grille to allow fitment to the new location on the top grille where the previous fins were removed.



Step 20

Using the factory bolts/screws from the below mounts, screw the grille into the plastic surrounds of the top grille into the location.

IMPORTANT NOTE

ENSURE THE SCREWS DO NOT OBSTRUCT THE MOTORS OR FINS FROM MOVING FREELY DURING OPERATION.

This can be tested by gently rotating the fins open and closed to check for obstructions.

**Step 21**

Re-route the cabling and plug the motor back into the grille.

Step 22

Using the factory 15mm bolts from previous step (8) of, secure the pre runner cheeks to the chassis. Do not tighten the bolts at this stage.



Step 23

From the bottom, install the (4) M12 nuts, bolts and washers to the internal of the chassis. Do not tighten the bolts at this stage.



Step 24 - WINCH ONLY

A)

IMPORTANT NOTE

THIS STEP IS FOR WINCH INSTALLATION ONLY

B) With the winch cradle on the ground or bench, mount the winch to the plate using the M14 countersunk bolts supplied in the bolt pack.

IMPORTANT NOTE

ENSURE THE WINCH WILL CLEAR THE FRONT CHASSIS CROSS MEMBER AND ANY FACTORY PIPING.

C) With the help of another person, place the winch cradle into position, and using the supplied M12 nuts, bolts, and washers, secure the winch cradle to the cheeks mounted to the chassis. Do not tighten at this stage.

Step 25

Using a tape measure, measure the internal gap between the side plates as pictured.

**Step 26**

Measure from the external of each cheek mount and ensure the gap is within -5mm from that of the bar.

Step 27

A) Carefully tighten the bolts of the winch cradle to the cheek plates.

B) Once secured, go ahead and tighten the bolts facing forward to the chassis (8) and ensure that the cradle is center of the vehicle.

Step 28

Tighten all winch cradle and cheek plates to max tightening torque of 100Nm or 75ft/pound. Mark all bolts with a paint pen.

Step 29 - BAR WIRING

- A) Disconnect the sensors and remove the cabling carefully.
- B) Remove the sensors from the bumper by spreading the plastic mount and allowing the sensor to be pulled out from the back of the bumper.
- C) Once the sensor is removed, push the mount forward through the bumper.



Step 30

- A) Using the factory bumper wiring, install into the pre runner bar from the passenger side of the bar. Feeding the cabling through the cutouts in the corners of the bar.
- B) OK Side lights can be installed using the supplied M8 bolts and spring washers.
- C) If using the OK pre runner bar wiring harness, now is the time to install the factory wiring.

Step 31 - COLOUR CODING

- A) If the sensors are a different colour to the pre runner bar, the sensors and the surrounds will need to be painted to suit. This process is best done prior to installation of the pre runner bar and sensors.
- B) Using 400 grit sandpaper, rough up the sensor face and carefully paint accordingly. Ensure to not apply a thick coat to the sensor face. This can potentially disrupt the sensor.

Step 32 - WINCH ONLY

IMPORTANT NOTE

THIS STEP IS FOR WINCH INSTALLATION ONLY

Install the fairlead on the pre runner bar.

Step 33

On the winch cradle install on the car, it is recommended to paint the forward facing bolts at the top of the winch cradle as pictured.

These bolts are visible through the air intake holes on the bar.

**Step 34**

A) Once all components are installed in the pre runner bar and the car is prepped, using the help of another person, lift the bar into position.

B) Slide the bar into location from the front and ensure the cheeks slide inside the mount plates on the pre runner bar.

C) If a winch is used, ensure the winch line is fed through the bar/fairlead and is hanging freely out the front of the bar.

D) Be careful to not damage the paint on the recovery points on the cheeks (protect with masking tape)

E) Using the M12 bolts, nuts and washers, secure the bar into location. Do not tighten at this stage.

Step 35

- A) Now is the time to install the grille back into location using the steps at the start of the installation. Ensure the camera plug is plugged back in and the mister tube.
- B) Plug the 16-pin cable below the passenger side headlight.
- C) Install the front plastic fascia and secure into location as pictured.



Step 36

- A) With the grille and fascia in location, using a tape measure, ensure there is a minimum gap of 20 mm from the top of the pre runner bar to the bottom side of the front grille and fascia.
- B) A floor jack may be helpful in this step to push up from below to hold in location
- C) When the gap between the bar and grille is level and has a minimum of 20mm, tighten all (8) of the M12 bolts to the pre runner mounts to max tightening torque of 100Nm or 75ft/pounds.



Step 37

Trim the inner front guards to suit the new bar using a box cutter or scissors.

**Step 38**

Finalise cabling for the pre-runner bar side lights or any additional lighting.

**Step 39**

Tighten the (4) bolts at the bottom of the cheek plates into the chassis to max tightening torque of 100Nm or 75ft/pounds.

Note

Depending on the chassis these plates may have a gap between the chassis and the cheek. Pack out with spare washers.

Step 40

Install the top half of the grille and bonnet latch.