

OUTBACK KITTERS

OK921013 OUTBACK KITTERS Adventure Rails™ MAX Roof Rack, Lightbar Compatible

FORD F-150 (2021-2025)

CONTENTS

- 1x **OK211004** Adventure Rails Max: Feet, Side Rails, Lights Box, 1 of 2
- 1x **OK211005** Adventure Rails Max V2 Includes: Extrusions Pack 5, Platform Plates Box (2 of 2)
- 1x **OK201123** Outback Kitters 2021+ Ford F150 Light Bar Wind Deflector to suit Adventure Rails Max V2 (Without Cutout)
- Left & Right Adventure Rails™ made from aluminium
- 5 x Crossbar Extrusions with Rubber Fillers
- 2 x Platform Plates
- 2 x Side Lights
- Front Wind Deflector - Lightbar Compatible
- 6 x Steel Mounting Feet, sandblasted, primed and powdercoated
- Fitting Kit
- Powdercoated Black finish for a tough but refined look

TOOLS NEEDED

TIME

HOURS

DIFFICULTY

IMPORTANT NOTES

- Always refer to your owners manual for Roof Loading Capacity.
- These are not suitable for Rooftop Tents
- Weight must be evenly distributed
- Adds 125mm to your roof height - measured from the centre of your roof, where the front & rear passenger doors meet.

FAILURE TO INSTALL THIS PRODUCT AS SPECIFIED IN THE INSTALLATION PROCEDURE WILL VOID ALL WARRANTY. IF ANY PARTS HAVE ARRIVED DAMAGED OR WERE NOT SUPPLIED, PLEASE TAKE PHOTOS AND CONTACT YOUR SUPPLIER.

ASSEMBLING THE RACK

The hard part's done. Now it's time to build the rack.

With the feet installed and locked in place, this part is straightforward. But like everything, take your time and line it up properly. A clean build here makes the final install quicker, easier, and looking exactly how it should.

It's recommended to assemble the rack on the ground before lifting it onto the vehicle. This makes alignment easier and avoids fighting it in the air. This step is also much easier with two people.

While it is possible to assemble the rack directly on the roof, it increases the risk of damaging the vehicle. We don't recommend it.

IMPORTANT NOTE

DO NOT FULLY TIGHTEN ANY BOLTS UNTIL THE ENTIRE RACK IS ASSEMBLED AND ALIGNED. ONCE EVERYTHING IS SITTING SQUARE, GO BACK AND TIGHTEN ALL FASTENERS PROPERLY.



Step 1

Install the 2nd and 4th crossbar extrusions between the side rails.

Note

The side rails feature both large and small cutouts. The smaller cutouts are used for mounting the extrusions, while the larger cutouts are designed for accessory mounting points.

Position the extrusions so that the exposed track (with the pre-installed nutcerts) is facing upwards. The underside of the extrusion is intentionally closed to reduce wind noise, ensure this side is facing down.

Using the supplied black M6 x 20 bolts & washers, loosely fasten the extrusions to the side rails. The pre-installed nutcerts are there to make this step quick and straightforward. You're welcome!

Do not fully tighten at this stage! Leave everything slightly loose to allow for alignment as the remaining extrusions are installed.





Step 2

Install the remaining extrusions.



Step 3

Install the front wind deflector using the supplied M6 bolts, washers, and extrusion channel nuts. Ensure all components are correctly positioned before fastening.

Note

The standard wind deflector mounts to the top of the extrusion. The lightbar wind deflector mounts to the front of the extrusion. Each wind deflector includes its own fitting kit, with the correct bolt lengths to suit the different extrusion channels.

Put in the channel nuts through the open slots on the extrusion and slide into place to match the hole positioning of the wind deflector.

Note

Images show positioning for the lightbar wind deflector.



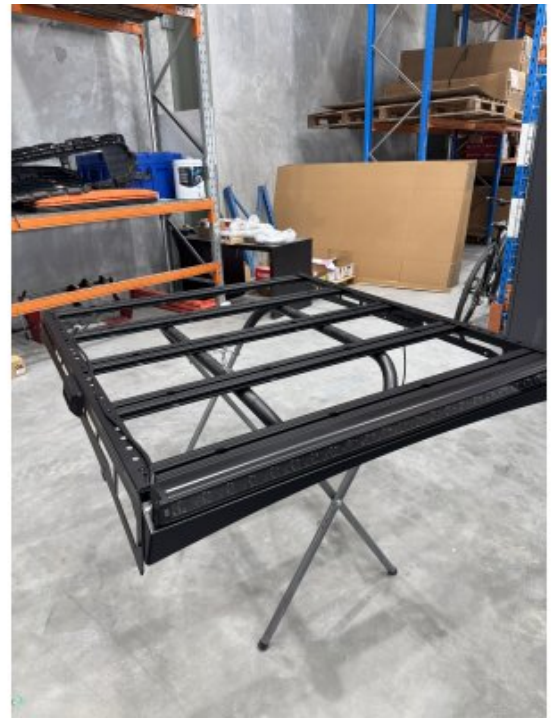
Step 4

Once all channel nuts are correctly positioned, place a washer onto each M6 bolt and fasten the wind deflector to the extrusion. Ensure everything is aligned before tightening.



Step 5

If installing front lights, now is the time to do it. Assemble the mounting brackets to the lights, then position them on the wind deflector and mark out the required holes before drilling. Ensure the wind deflector fasteners are fully tightened before installing the lights, as access will be limited once the lights are fitted. You won't be getting back in there easily!



Step 6

Do not install the Platform Plates™ at this stage. These will be installed once the rack is mounted on the roof and fully aligned. Installing them too early will make it difficult to fasten the side rails to the feet.

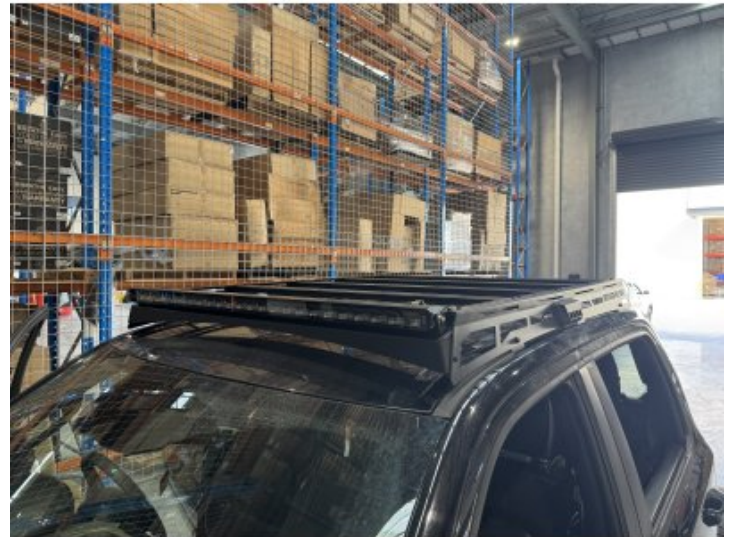
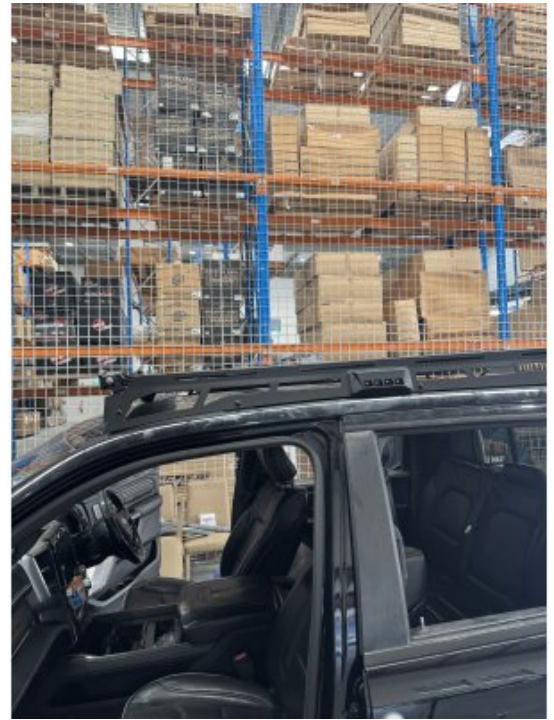
Step 7

With assistance from a friend, lift the assembled rack onto the roof. Have the M8 x 20 bolts, washers, and nuts ready before you start.

Position the rack onto the feet. While holding it in place (or using a spacer such as a stick or rolled electrical tape), feed the M8 bolt and washer through the side rails and feet. The side rails should sit on the outside of the feet.

Once the first bolts are in, the rack will support itself.

Install the remaining washers and nuts on the inside of the feet and fasten the side rails securely.

**Step 8**

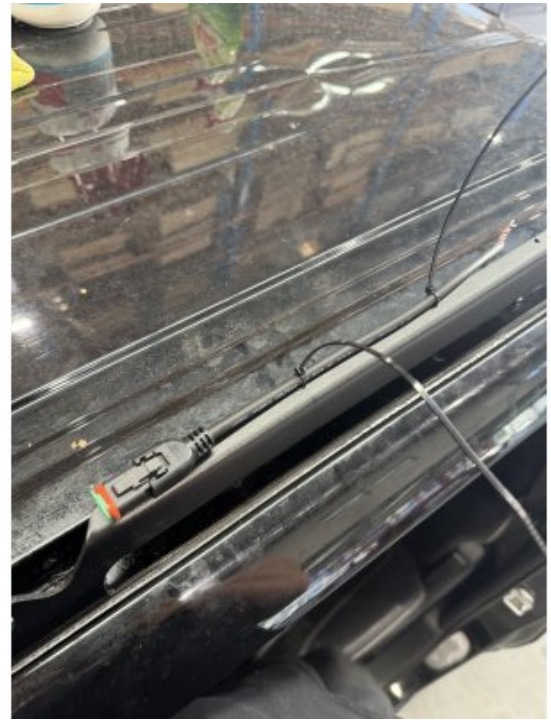
Install the Platform Plates using the M6 Bolts, Washers and channel nuts.

Step 9

The feet feature integrated zip tie slots, allowing you to run cabling neatly and discreetly along the inside of the rack.

If installing front or side lights, UHF mounts, Starlink, or any other accessories requiring cabling, use these for a cleaner, more organised install.

It is suggested you install any other accessories that require wiring before finalising the placement of the Platform Plates. Once the Platform Plates are installed, access to the feet gets a bit more difficult.



Step 10

Once you are happy with the fitment, tighten up all the bolts in the following order.

- 1) Feet and Side Rails
- 2) Side Rails and Extrusions
- 3) Platform Plates

This sequence ensures the rack is aligned correctly before everything is fully secured.

Go back over all fasteners once tightened to confirm everything is properly torqued and seated.

IMPORTANT NOTE

AFTER YOUR FIRST DRIVE, AND AGAIN AFTER ANY ROUGH ROADS. RE-CHECK ALL FASTENERS. THERE SHOULD BE NO MOVEMENT OR RATTLING.

FINAL CHECK

Go over the entire rack and ensure all bolts, fasteners, and components are properly tightened and aligned.

Check that all wiring is secured, clear of sharp edges, and neatly routed using the integrated cable management points.

Give the rack a firm shake. There should be no movement, flex, or rattling. If it rattles, you've missed something.

Take a step back and inspect the overall fitment.

Everything should sit square, even, and exactly where it should be.

You're done. Enjoy the setup.