

OUTBACK KITTERS

OK911013TB-2TA-K OUTBACK KITTERS Pre Runner Bar, 2 Tabs, Texture Black

RAM 2500/3500 (2025+)

CONTENTS

- 1x **OK911012TB-2TA** Pre Runner Bar, 2 Tabs, Texture Black
- 2x **OK181003** Outback Kitters 12" Light Bar for Pre Runner Bars, Flood Light, Black Lens
- 1x **OKPRGE001** Outback Kitters Aluminium Fairlead, Black
- 6x **OK121221** Flat Parking Sensor Housing (Single)
- 1x **OKWHPR002** Pre Runner Bar Wiring Harness for 2 x Side Lights & Optional Front Lightbar
- 1x **OKWHPR003** Outback Kitters Wiring Harness for Lightbar Power including Fuses & Relays
- 1x **OK131030** CANFD Module - High Beam, Left/Right Indicator, DRL including 12 Pin Headlight Harness
- 1x **PR_FITTINGKIT** Pre Runner Fitting Kit
- 1x **PR_CRADLEMOUNT** Pre Runner - Cradle Mount
- 2x **PR_CHEEKS** Pre Runner - Cheeks (LH, RH)
- 1x **PR_COMPLIANCEPLATE** Pre Runner - Compliance Plate
- 1x **PR_PALLET** 2200x600 Pallet
- Pre Runner Bar
- 2x 12" Light Bars
- Parking Sensor Housing & Extensions
- Harnesses
- Fitting Kit
- Cradle Mount
- Cheeks
- Compliance Plate

TOOLS NEEDED

- Ratchet/electric ratchet
- Breaker bar/rattle gun
- Various sized sockets
- Various sized spanners
- Drill/drill bits
- Air Saw
- Stanley Knife
- Clip removal tool
- Ruler and marker pen
- Qualified auto electrician recommended
- Second person to help install the bar

TIME

6 HOURS

DIFFICULTY

MEDIUM

IMPORTANT NOTES

- Bar requires the ADAS Module Relocation Bracket when running 3+ spotlights
- Incompatible with under hoop lightbar
- Winches larger in shape than the Carbon Scout Pro 15,000lb Winch will not fit

FAILURE TO INSTALL THIS PRODUCT AS SPECIFIED IN THE INSTALLATION PROCEDURE WILL VOID ALL WARRANTY. IF ANY PARTS HAVE ARRIVED DAMAGED OR WERE NOT SUPPLIED, PLEASE TAKE PHOTOS AND CONTACT YOUR SUPPLIER.

Step 1

A) Start by parking the car on flat level ground with the handbrake on, then remove the number plate and set aside for later fitment.

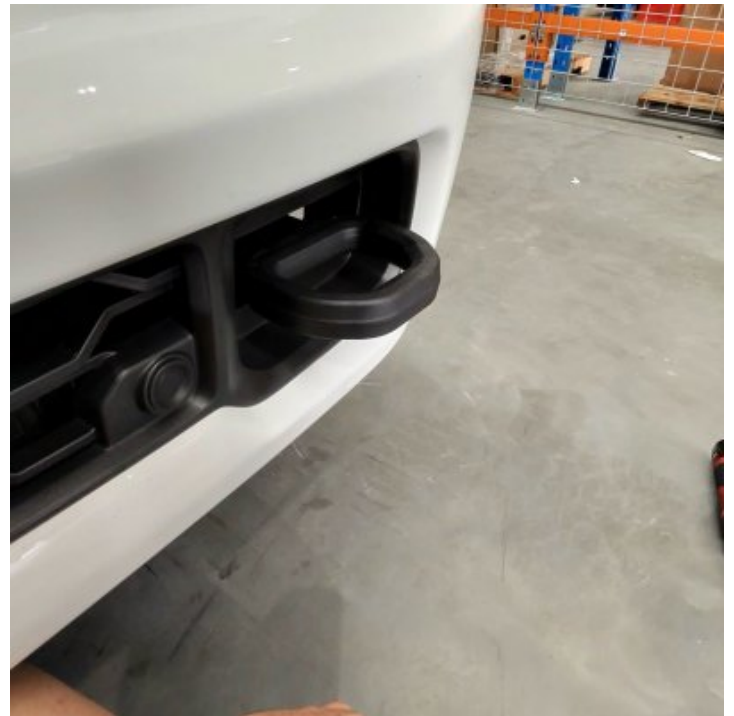
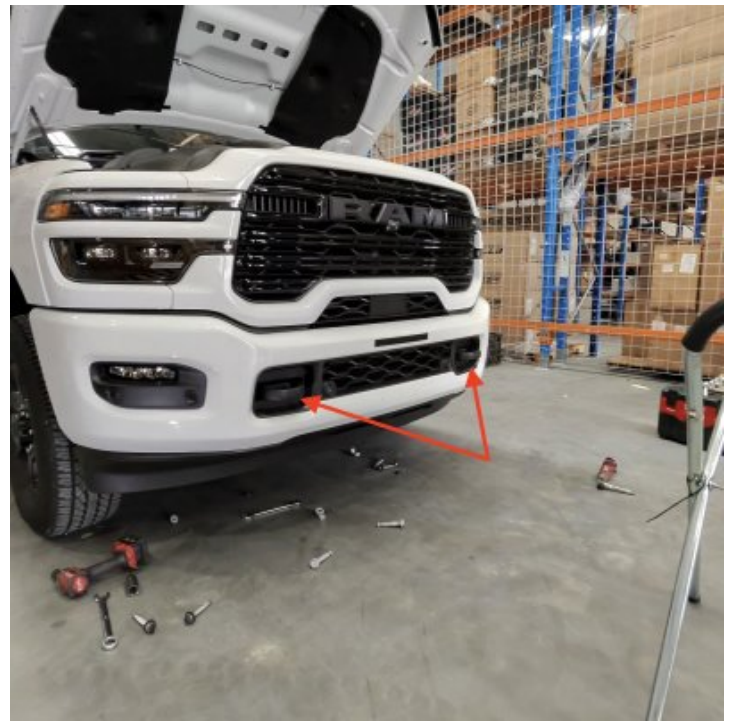
B) Remove the bolts securing the inner guard to the bumper on both sides of the vehicle.

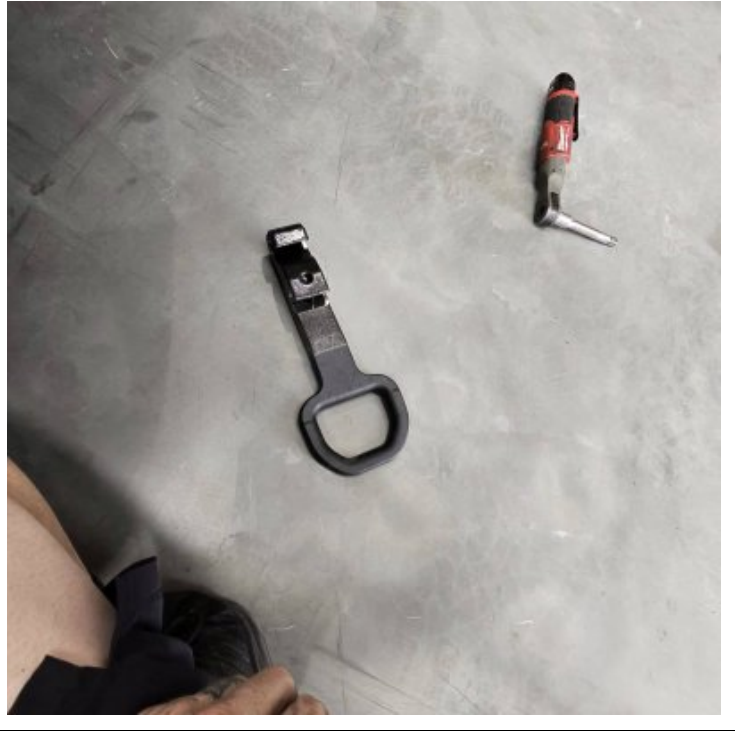


Step 2

A) Identify the front tow hooks and where they bolt to behind the bumper.

B) Discard the OEM tow hooks as they are no longer used.





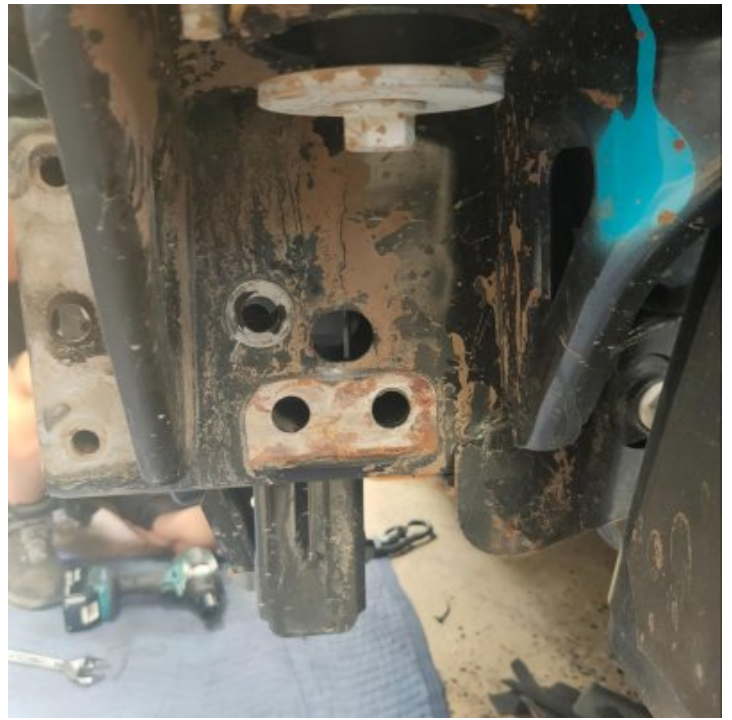
Step 3

- A) Remove the 2 black bolts securing the bumper to the chassis on both sides of the vehicle (*keep these bolt and nuts for later fitment*)
- B) Disconnect the sensor harness plug on the LHS. The help of a second person, pull the bumper off slowly and put to the side.



Step 4

Remove and discard the snow plough brackets



Step 5

Remove the 4 bolts securing the intercooler wind deflector (*2 each side*).

Next, remove all the clips securing the wind deflector on the bottom of the intercooler. Remove the wind deflector and discard it.





Step 6

- A) Layout the side cheeks and winch cradle to ensure that you have a LHS & RHS
- B) Secure the cheeks to the chassis using the long black bolts and nuts previously pulled out in step 3a (do not tighten yet)
- C) Place the winch cradle between the cheeks with the recovery points facing to the front
- D) Using the 2x counter sunk M10 nuts & bolts from the hardware kit, secure the cradle to the cheeks (not to tighten yet)
Use the 4x M12 nuts bolts and washers and loosely put in the other holes in the rear of the winch cradle (not to tighten yet)



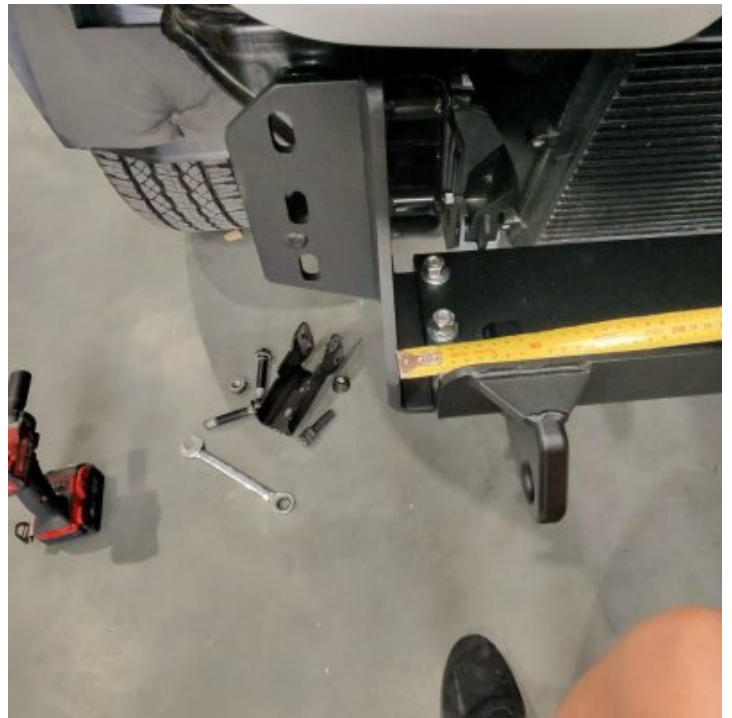




Step 7

Measure the gap between the cradle to the cheek on both sides and ensure they are the same to centre the cradle

Tighten the winch cradle to the cheeks
90ft-lbs



Step 8

A) Using a clip removal tool, proceed to remove the OEM wiring loom from the OEM bumper removed in step 3, take note of orientation.

B) Carefully unclip and remove each sensor from the sensor bezels and take note of the order and orientation for installation on the bar.





Step 9

A) Install the supplied sensor housings into the bar. Ensure that the orientation of the sensor copies the OEM placement on the bumper



Step 10

A) Install the factory wiring loom removed from the bumper into the bar by feeding it through the cutout section in the bar in the same orientation it was removed.

B) Clip the wiring harness plugs back into all the sensors. If required use the Outback Kitters 300mm sensor extensions to reach the sensors on the factory loom.

C) 2025+ Models will have a different Parking Sensor Extension Harness to the 2019-2024. If your bar did not come with the right harness, you will need to cut and extend them manually until the 2025+ harnesses are manufactured.



Step 11

A) Install the supplied side lights into the bar. Use the "Pre Runner Bar Fitting Kit" hardware.

B) Install the Outback Kitters Fairlead to the front of the bar. Ensure that the washer is only on the inside of the fairlead





Step 12

A) If you are using the Outback Kitters Pre Runner Bar harness kit, install the bar part of the harness into the bar before mounting to the car. Run the harness through the same pathway as the factory sensor harness and secure to the bar. Plug in the side lights, if you are not using a light bar, ensure that the spare 2 pin connector is taped up and secured away in the cable pathway.

B) Before the bar is put on, ensure the second part to the bar harness is installed into the car and the yellow connector is ready to be plugged in under the headlight (see picture)



Step 13

A) With the help of a friend or friends, carefully guide the bar onto the cradle and loosely install the supplied M12 bolts into the mounting holes with M12 washers and lock nuts from the bolt kit.

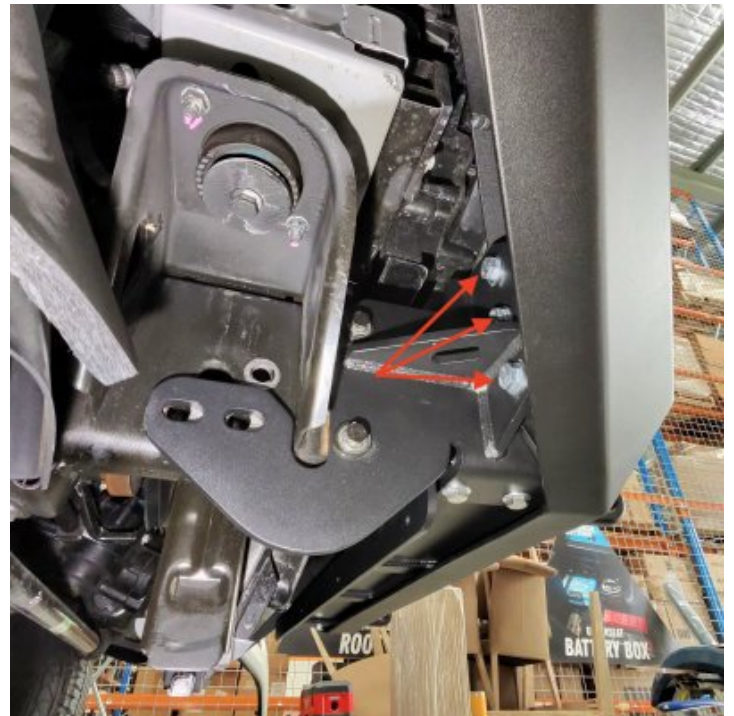
B) Align the bar and ensure the gap is even below the headlights. Ensure the recovery points are evenly aligned to the bar.

C) An expectable gap is 15-20mm. This will be enough for any movement between the body and chassis while driving.

Utilise the elongated holes on the cheek plates and bar bolts to allow for precise alignment. Use a workshop trolley to place under the bar to lift or the hands of someone to hold while you tighten all the cheek plates and bar bolts.

Tighten to 90ft-lbs

D) Place some tape or protective layer on the recovery points to stop any scratches on the paint.



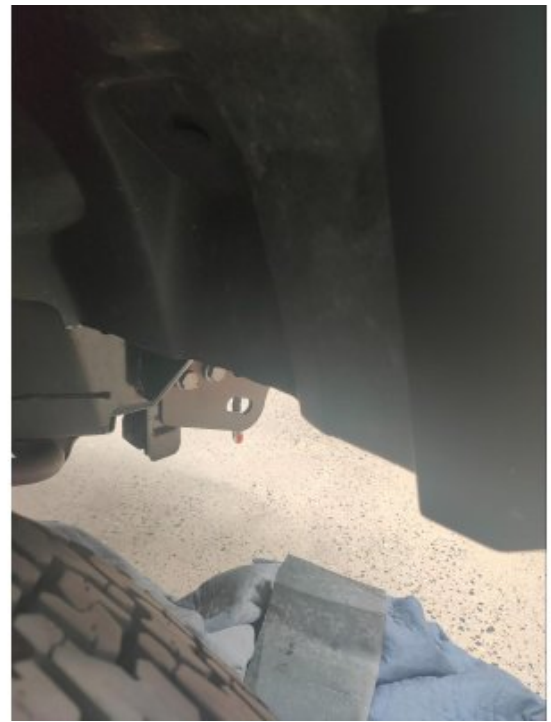


Step 14

A) Measure 220mm up from the bottom of the inner guard and mark a line across the inner guard, square. Repeat on the other side.

B) Cut along the line using an air saw and then clean up the edge with a stanley knife, repeat on the other side.





Step 15

- A) Connect all electrical plugs and cable tie up all wiring.
- B) Check all fasteners are tightened and paint marked.
- C) Test the function of all lights (and winch if installed).
- D) Wipe down and clean all marks off the vehicle and bar.

Step 16

BASH PLATE INSTALLATION

Open the bash plate and fitting kit and ensure there is a LHS & RHS bracket and a bash plate in the kit



Step 17

Mount the brackets to the chassis where the old snow plow mounts were originally. Using the M16 x 100mm Bolts.

Ensure the brackets are orientated correctly with the open side to the front of the vehicle.

Do not tighten these bolts

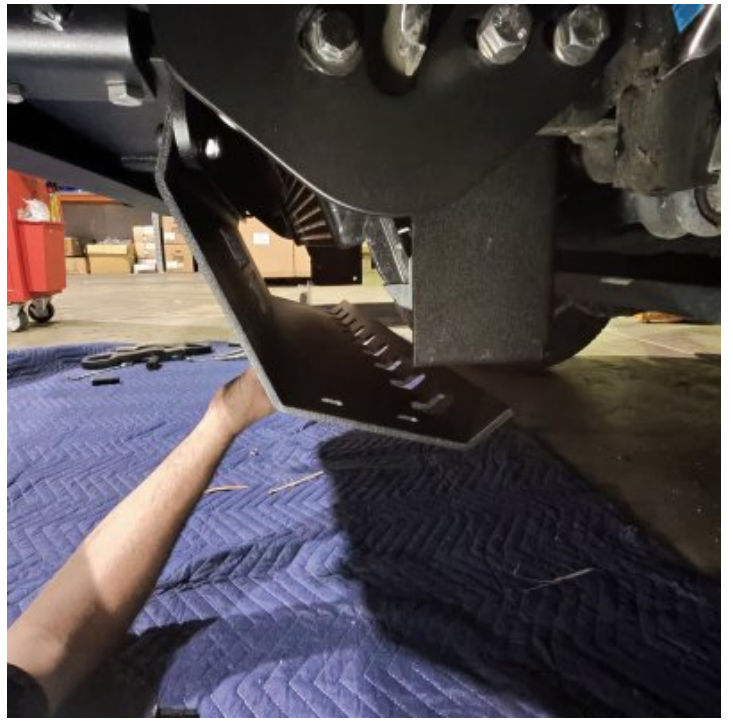
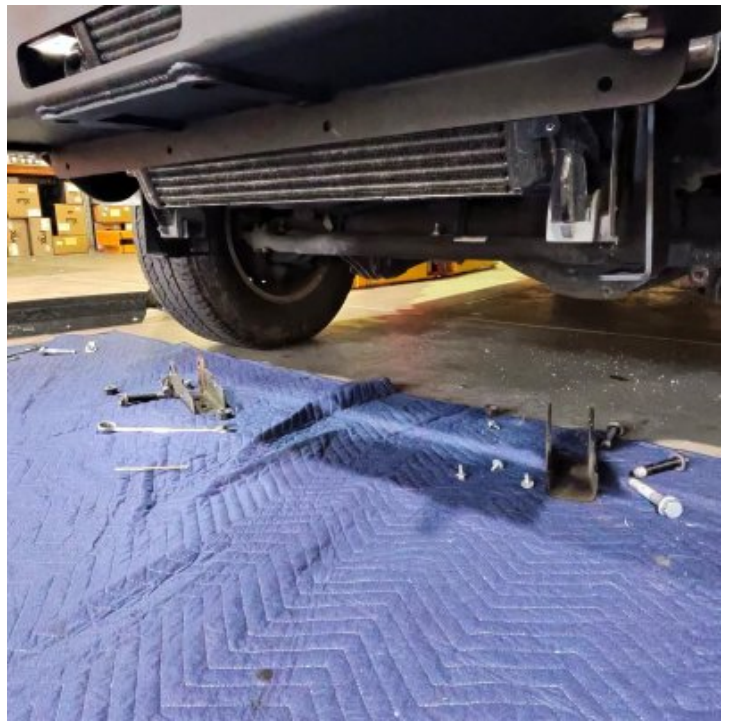
Using the M8 Bolts and Nuts, loosely hang the bash plate off the back of the winch cradle and shown in the picture

Line up the bash plate to the brackets and use the M8 bolts to secure.

Tighten all bolts to 90ft-Lbs

COMPLETE





Step 18

Got a sick ride that you are proud to show off? Tag us in our socials

